

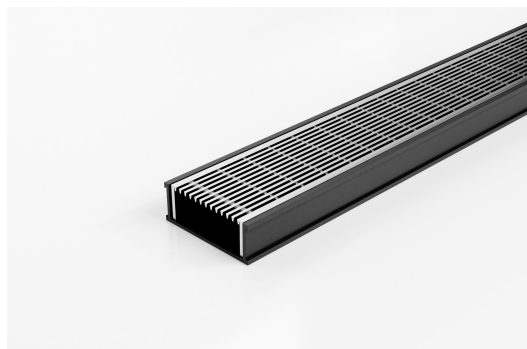


ARCHITECTURAL  
GRATES + DRAINS



# 65ARGBL25

## Linear Drain



The 65ARGBL25 is a modular drainage kit with stainless steel grate(s), and a black uPVC drainage channel and fittings.

The 65ARGBL25 is a premium architectural style grate featuring a 2mm wire/2.5mm gap.

Kits longer than 3000mm are available on request.

The grate(s) are manufactured from 316 marine grade stainless steel and the channel and fittings from uPVC.

Black uPVC channel only suitable for Internal use only

**Refer to AS3500 for outlet pipe sizes specific to your installation.**

**Code** 65ARGBL25

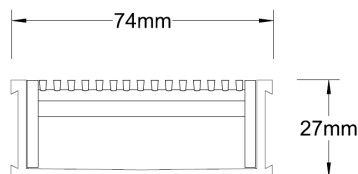
**Range** 65

**Grate Style** AR

**Category** Modular Kits

**Channel Material** uPVC

**Steel Grade** 316

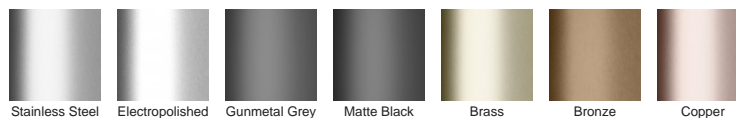


Grates longer than 1500mm supplied in sections. Tile Inserts longer than 1200mm supplied in sections. Channels over 3000mm supplied in sections with joiner. +/-2mm tolerance on dimensions.

### SPECIFICATIONS + DIMENSIONS

<b>Channel Width</b>	74mm
<b>Channel Depth</b>	27mm
<b>Length(s)</b>	900mm 1000mm 1200mm 1500mm 1800mm 2000mm 2200mm 2400mm 2700mm 3000mm
<b>Outlet Size</b>	DN40, DN50

### STORMTECH COLOUR FINISHES



**Electroplate finishes subject to natural variation with time and local environment. Factors such as pools/surf beaches may require electropolishing. Contact us for suitability.**

### PRODUCT APPLICATIONS

Bathroom Drainage  
Aged / Health Care Drainage  
Commercial Drainage  
Courtyard / Patio Drainage  
Pool and Spa Area Drainage  
Hospitality Drainage

Shower Drainage  
Multi-Residential Drainage  
Special Needs Drainage  
Suspended Slab Drainage  
Wet Area Drainage

Copyright © Stormtech Pty Ltd. Patent 733361. Drawings not to scale, please use dimensions shown. Downloaded 25/04/2025 (please check for updates)



Visit [stormtech.com.au](http://stormtech.com.au)  
for tools + inspiration.

Phone **1300 653 403**

Email [info@stormtech.com.au](mailto:info@stormtech.com.au)