

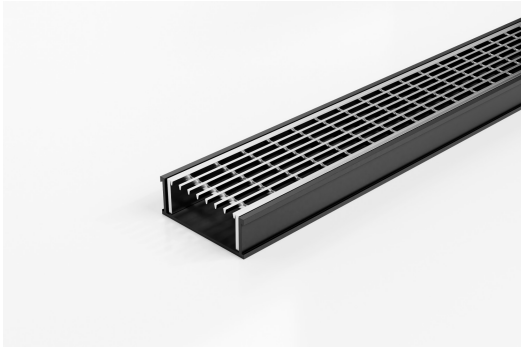


ARCHITECTURAL  
GRATES + DRAINS



# 65TRGBL25

## Linear Drain



The 65TRBL25 is a standard style grate featuring a 3mm wire/5mm gap.

The 65TRGBL25 is a modular drainage kit with stainless steel grate(s), a uPVC drainage channel and fittings.

The grate(s) are manufactured from 316 marine grade stainless steel and the channel and fittings from uPVC.

Please note that our TR grates have a non finished finish.

Kits longer than 3000mm are available on request.

Black uPVC channel only suitable for Internal use only

**Refer to AS3500 for outlet pipe sizes specific to your installation.**

**Code** 65TRGBL25

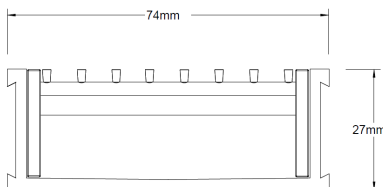
**Range** 65

**Grate Style** TR

**Category** Modular Kits

**Channel Material** uPVC

**Steel Grade** 316

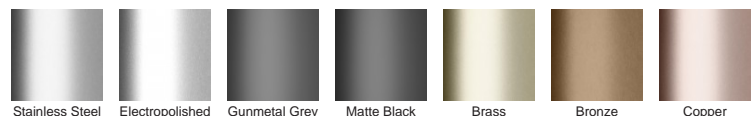


Grates longer than 1500mm supplied in sections. Tile Inserts longer than 1200mm supplied in sections. Channels over 3000mm supplied in sections with joiner. +/-2mm tolerance on dimensions.

### SPECIFICATIONS + DIMENSIONS

<b>Channel Width</b>	74mm
<b>Channel Depth</b>	27mm
<b>Length(s)</b>	900mm 1000mm 1200mm 1500mm 1800mm 2000mm 2200mm 2400mm 2700mm 3000mm
<b>Outlet Size</b>	DN40, DN50

### STORMTECH COLOUR FINISHES



Electroplate finishes subject to natural variation with time and local environment. Factors such as pools/surf beaches may require electropolishing. Contact us for suitability.

### PRODUCT APPLICATIONS

Bathroom Drainage  
Aged / Health Care Drainage  
Commercial Drainage  
Pool and Spa Area Drainage  
Hospitality Drainage  
Shower Drainage

Multi-Residential Drainage  
Special Needs Drainage  
Suspended Slab Drainage  
Wet Area Drainage

Copyright © Stormtech Pty Ltd. Patent 733361. Drawings not to scale, please use dimensions shown. Downloaded 13/03/2025 (please check for updates)



Visit [stormtech.com.au](http://stormtech.com.au)  
for tools + inspiration.

Phone **1300 653 403**

Email [info@stormtech.com.au](mailto:info@stormtech.com.au)