



Grate Insights

Issue 1, February 2019
Brought to you by Stormtech



Innovation, Aesthetics, & Performance

Exploring drainage design in Australia –
and where it's headed next.



Grate Insights - Welcome

Has there ever been a more exciting time for Australian design and construction? As the quantity – and quality – of construction projects across the country continues to rise, so do levels of competition and innovation. Over the past year we've been astounded by the creativity and quality that we've seen in our clients' projects, and can't wait to see how these develop in future. Moving forward, we're also keen to strengthen our industry ties and help advance the drainage sector as a whole.

As a proudly Australian-owned family business, we fully understand the positive effect of strong, meaningful relationships. Whether it's with clients, designers, or industry bodies, building relationships and trust is something that we take seriously. It's our ability to understand your needs and how these can best

be met that sets us apart from our competitors, and keeps clients coming back time and time again.

We're also serious about developing our industry for the better. In 2018, this focus was evident in a number of ways including our return as sponsors of Architecture & Design's Sustainability Awards and our ongoing contribution to setting the national standards for linear drainage through our membership of the Standards Australia Committee.

Stormtech approaches everything we do – whether it's product development, lobbying for industry change, or developing bespoke solutions for clients – with a high level of care and genuine passion. Both of these were present in the preparation of this inaugural edition of Grate Insights, which is unlike

anything we've ever done before. We've put together the following pages to update you on the latest in architectural drainage and to highlight all the fantastic projects we've been involved in. With the following selection of projects, resources, and interviews, we celebrate both our successes and those of our clients and collaborators to give you an insider's look into the fascinating world of drainage.

We hope you enjoy the first edition of Grate Insights and that it inspires you in the same way that every new brief and project journey with a client inspires us.

TROY CREIGHTON
CEO, Stormtech

Grate Innovation by Stormtech

Threshold Series

Architectural Grates + Drains Level Threshold Drainage









Featuring a linear stainless steel grate or tile insert with concealed channel section for door tracks and thresholds.




Threshold Series by Stormtech

- Zero Threshold - seamless continuity between indoor and outdoor areas
- Elegant integration into sliding door tracks, bi-folds and hinged doors
- Compatible with major door manufacturers
- Access and Mobility Code Compliant (AS1428)
- Full stainless steel fabrication

Available Grate Styles



AR



TI



PS



MND



TR

Stormtech Pty Ltd

Telephone 1300 653 403 | Web stormtech.com.au



The New Wave of Luxury Living

Just minutes from the CBD and surrounded by some of the best coastal walks and beaches Australia has to offer, Bondi is arguably Sydney's most desirable neighbourhood. The 2026 postcode represents the best of cosmopolitan living mixed with the surf lifestyle, and whether it is to live, stay or play, Bondi real estate is hot property.

In December 2015 Bondi's newest development, Pacific Bondi, was completed, taking the area's luxury living to a whole new level.

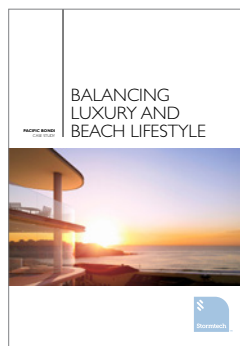
A dynamic redevelopment of the Swiss Grand Hotel, the Pacific Bondi has brought together some of the best architects and interior designers Australia has to offer to collaborate on a project that includes a mix of designer residential, boutique hotel and premium retail sites.

Occupying almost an entire block, with a 120 metre frontage to Campbell Parade, Pacific Bondi is located across the road from Australia's most iconic beach, with the development including:

The Bondi: 112 premium-end apartments including 19 stunning two level penthouses

QT Bondi: 69 boutique, high-end hotel apartments

KEEP READING
<https://bit.ly/2TzPnV8>





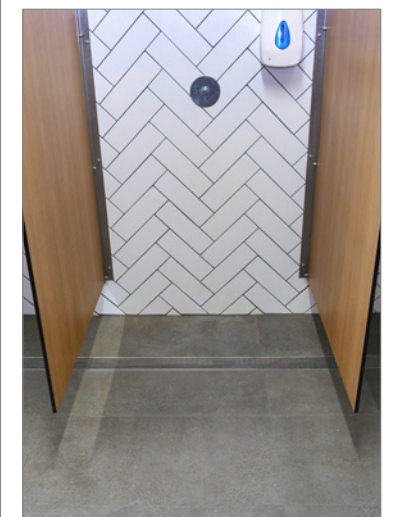
Bringing Utility to an Icon

Since first opening its doors in 1929, Bondi Icebergs Club has been a landmark Sydney destination. Perched high above the southern end of Bondi Beach, the iconic swimming club and hospitality venue is the world's only licensed Winter Swimming Club, and attracts droves of local and international tourists each year.

In 2018, the Club's operators decided that the venue needed a minor refresh to keep up with visitor demand and refurbishment of the amenities was undertaken. As part of this, Stormtech was tasked with supplying a complete drainage solution for the Club's 7-shower changeroom within a tight deadline. In just seven days, Stormtech worked closely with the Club to develop and install approximately 30 lineal metres of bespoke

drainage that enhance the space's utility and ensure performance well into the future.

The completed project pairs Stormtech's signature streamlined, high functionality with the best of contemporary amenity design – a fitting combination for the iconic venue.



Grate Cares for Aged Care

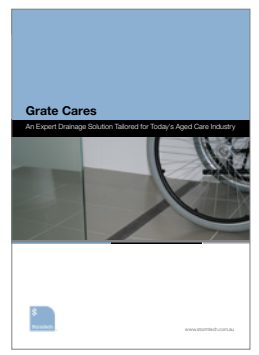
As the Australian population continues to age, pressure on aged care facilities across the country to deliver safe, accessible, and equitable patient care is mounting. In the face of predictions that the over-85 population is set to triple in coming years, it's clear that architects and builders must work to eliminate barriers to access and mobility and deliver aged care facilities that serve and empower residents and staff alike.

In response to this, a number of Australian regulations have emerged to outline the minimum standards for today's care facilities, including the Building Code of Australia (BCA) and Aged Care Act 1997. The Department of Health also sets forth certain requirements that must be met by aged care facilities. Given the depth and complexity of these

standards, it is often difficult for design practitioners to clearly understand their responsibilities and how these can be met.

This whitepaper addresses this difficulty and provides designers and specifiers with the practical knowledge they need to deliver high quality, fully compliant drainage solutions for aged care facilities.

KEEP READING
<https://bit.ly/2DUL6Gy>





Planning for Drainage Perfection

In spite of being vital to the safe, efficient day-to-day operation of any residential or commercial project, drains are a frequently overlooked construction component. It is a common mistake amongst builders and designers to specify or detail the drain only once most construction has already been completed, an approach that can have serious effects in the form of non-compliance or unfitness for purpose. Down the track, inappropriate drainage can also cause significant damage to a structure and its surroundings.

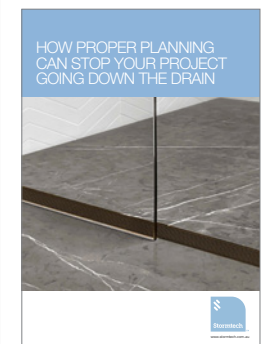
To avoid selecting the wrong drainage solution, it is essential that designers and specifiers take drains into account at the earliest stages of design and planning. By carefully considering regulatory requirements alongside the location, style, and installation requirements

of a drain, designers can be confident that their chosen drain will be effective and long lasting.

In this whitepaper we explore each of these issues in depth, and equip readers with the skills required for a seamless construction process and high quality finished project.

KEEP READING

<https://bit.ly/2BmoFbo>





Architecture & Design x Peter Stutchbury

Peter Stutchbury is an Australian architect who requires little introduction. The 2015 recipient of the Gold Medal of the Australian Institute of Architects, he is rightfully regarded as one of the nation's leading lights in innovative, sustainable architecture that responds sensitively to brief and context. We recently caught up with Peter to hear his insights into Australian residential architecture and what he believes makes design in our country so unique.

You've been in practice for nearly 40 years, during which time you've amassed a diverse portfolio and established yourself as one of Australia's foremost residential architects. To you, what are the most important considerations when designing a home in Australia?

Connection with place is important, and the home must be appropriate for the end users. It's also important that there is the addition of beauty – which inspires one's life – and a strong architectural ethos in the sense of a well-considered approach.

Are these considerations universal? Or is there something about Australia that inspires a unique approach to residential architecture?

Definitely: the landscape. Australia is 40% virgin landscape, second only to Antarctica, which is 95%; that has a major impact. The patterns of the land still exist even within the city landscape, to a degree. So that's our biggest responsibility, second to which is the spirituality of Australia. That's seen through the Indigenous Australian

peoples and their lifestyles, and I think it's an idea that is slowly permeating wider society too.

Over the course of your career, how have you seen attitudes to residential design in Australia change? What do you think is driving this change?

I've seen it become a lot more conventional and less experimental in terms of the way that people respond to lifestyles or living place. Over the last 20 years we've inherited a housing typology that is basically international: the Internet has become so successful and people can look at style around the world without referencing a place necessarily. So if you look at buildings these days, they have a common denominator of style. Within that there is incredible talent, but [fewer designers]

now divert fundamentally from that style: they don't experiment with materials to a large degree, and they don't experiment with how the building might understand its past and its future. Whereas a lot of buildings throughout Europe and even Africa and India are all so simple that they can change function overnight. They're not crowded with rooms – they're crowded with lifestyle.

In 2017 you completed a home in Guerilla Bay on the NSW South Coast. Can you please talk me through the brief for this project and the design strategies that you used to address this?

The brief was from a very sensitive, highly educated lady from Canberra who had just bought a really beautiful piece of land at Guerilla Bay, on the edge of Australia. It was looking slightly North and was in a forest – not a big lot but big enough. What she wanted was a place that she could retreat to and live in for 6 months of the year, the idea being that her best friend would live there for the other 6 months and write a book. So there was a duality of people, and that's how the project really started. The site was a beautiful woodland on the coast, which is actually quite rare. You often get spotted gum forests, but woodlands are more open and the trees are all a bit stunted, and there's native grass on the ground.



I deliberately kept the building incredibly small and placed it in such a way that engaged with the primary aspect of the site, this being a beautiful look out across the bay to the rocks that Guerilla Bay is well known for. The rocks have deep Aboriginal meaning, and I wanted to connect with those; the story of the rocks is now a part of the house. I also wanted to connect with sunrise and sunset, because through a woodland that light is particularly beautiful – that light really comes alive.

What role did Stormtech products play in bringing this vision to life?

We often specify Stormtech products, for several reasons.

The first is that they are incredibly practical – failsafe, if you like – in that they're not overly decorative and are made out of sensible materials. [The company] continues to develop: they've never just taken one design and stayed with it, and on top of that they're a wonderful Australian family. I do think that we need to support our local inventors, and they are incredible across the board in terms of providing answers to the problem of drainage in any situation, be this external or internal. We always specify Stormtech, except in situations where for whatever reason that's inappropriate – but that's very rare.

Proud sponsors of:



Setting the Standard for Sustainability

Since our establishment nearly three decades ago, Stormtech has always prided ourselves on our holistic, nuanced focus on environmentally friendly design. To us “sustainability” is not just a buzzword: it’s absolutely central to every aspect of the way we operate and the products that we produce. Our reputation as one of Australasia’s most sustainable building products manufacturers is no accident, and is instead the product of decades of embracing green manufacturing and strategically approaching material and supplier selection. In our view, no part of the design and realisation process of a new product is too big or too small to be closely examined to understand its impact on the environment and how this can be reduced.

Part of this strategic approach is recognising that the complex standards

and regulations that govern Australian construction are not restrictions so much as they are opportunities to challenge convention and investigate alternatives. Whether they’ve pushed us to consider unconventional materials and manufacturing methods or explore new forms and approaches to functionality, regulatory requirements have always been central to the way we work and design.

Our goal is to make this focus on sustainability and compliance not just one of our signature characteristics, but also a widespread element of our industry as a whole. That’s why we’ve decided to lead by example, and taken on leadership roles within the growing national design and construction industry. In 2017 and 2018, this leadership took the form of sponsoring Architecture & Design’s Sustainability Awards, the primary platform

for celebrating sustainable projects and products across the country. Beyond this, we remain members of the Standards Australia Committee, a role that we take seriously as part of our efforts to raise the bar for environmental performance within our industry.

As we approach our thirtieth year of operation, the Stormtech focus on sustainability and innovation remains as strong as ever. We’re constantly on the look out for new, efficient ways of designing and working and relish the challenges that working within a dynamic, ever-evolving industry presents. As environmental concerns continue to mount around the world, it’s vital that we unite as an industry to tackle these concerns head-on: the time is now for change, creativity, and carefully considered design and construction.



Stormtech

www.stormtech.com.au